

Tube Flow indicator

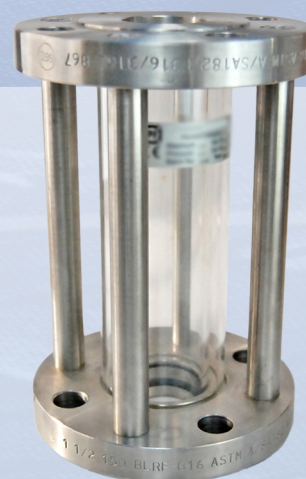
Technical Datasheet

This straight through tube sight glass is ideal for you to visually check the presence, colour and condition of a liquid

The Tube flow indicator allows a 360 degrees visual indication of the flow and contents in the pipes.

It has a plain straight through borosilicate glass tube with stainless steel flanged ends and is used to check for the presence of a liquid where there is intermittent flow, partially filled lines or entrained air.

It can be used in vertical or horizontal lines.



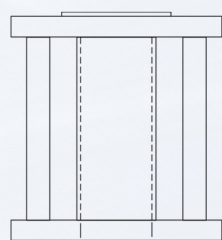
Features

Pressure:	up to 10 bar
Temperature:	up to 150°C
Sizes:	15 to 200mm
Material:	Stainless steel
Connections:	ANSI150,ANSI300, PN16
CE marked and fully PED compliant	

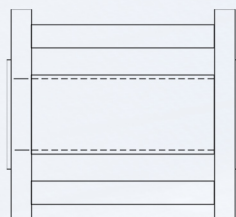
Dimensions

Size "D" (mm)	Size "L" (mm)	Max. Press. (bar)
15	120	10
20	120	10
25	140	10
40	195	6
50	225	6
80	225	6
100	225	6
150	250	6
200	250	6

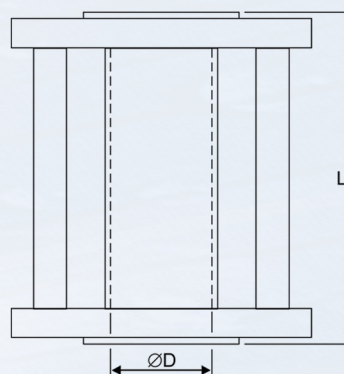
Mounting position



Vertical lines



Horizontal lines



Specifications are subject to change without notice.
Product images are for illustrative purposes only.