

P 10 Procedure TCP/IP Installation



Arkon Flow Systems

Arkon Flow Systems, s.r.o., Příkop 8, 602 00 Břno, Czech Republic
Correspondence address: Přízova 1-3, 602 00 Břno, Czech Republic

Tel. +420 543 214 822, Tel./Fax +420 543 215 249

Enquiries/ Orders/ General questions: office@arkon.co.uk

Marketing support/ Brochures: marketing@arkon.co.uk

Technical support: support@arkon.co.uk

www.arkon.co.uk



P 10 Procedure: TCP/IP Installation

Firmware: 2.0 and newer
Software: 1.0.6.12 and newer

List of Contents

1. INTRODUCTION.....	3
1.1 SYSTEM REQUIREMENTS.....	3
2. INSTALLATION.....	3
2.1 INSTALLATION OF DEVICEINSTALLER	3
2.2 SETUP IP ADDRESS OF TCP/IP.....	6
2.3 INSTALLATION OF LANTRONIX CPR.....	9
2.4 SETUP VIRTUAL COM PORT WITH CPR MANAGER PROGRAM.....	12
3. STARTING THE PROGRAM	16

1. Introduction

This document describes install and setup the TCP/IP module under MS Windows XP SP2.

1.1 System requirements

There are minimum hardware and software requirements of your computer that must be satisfied to ensure that the software functions properly. These are:

- PC with network card,
- MS Windows XP operating system with service pack 2 or higher,
- MAG X1 Software or other
- MAG X1 flowmeter with TCP/IP module.

2. Installation

2.1 Installation of DeviceInstaller

Latest version of DeviceInstaller:

http://ltxfac.custhelp.com/cgi-bin/ltxfac.cfg/php/enduser/std_adp.php?p_faqid=644

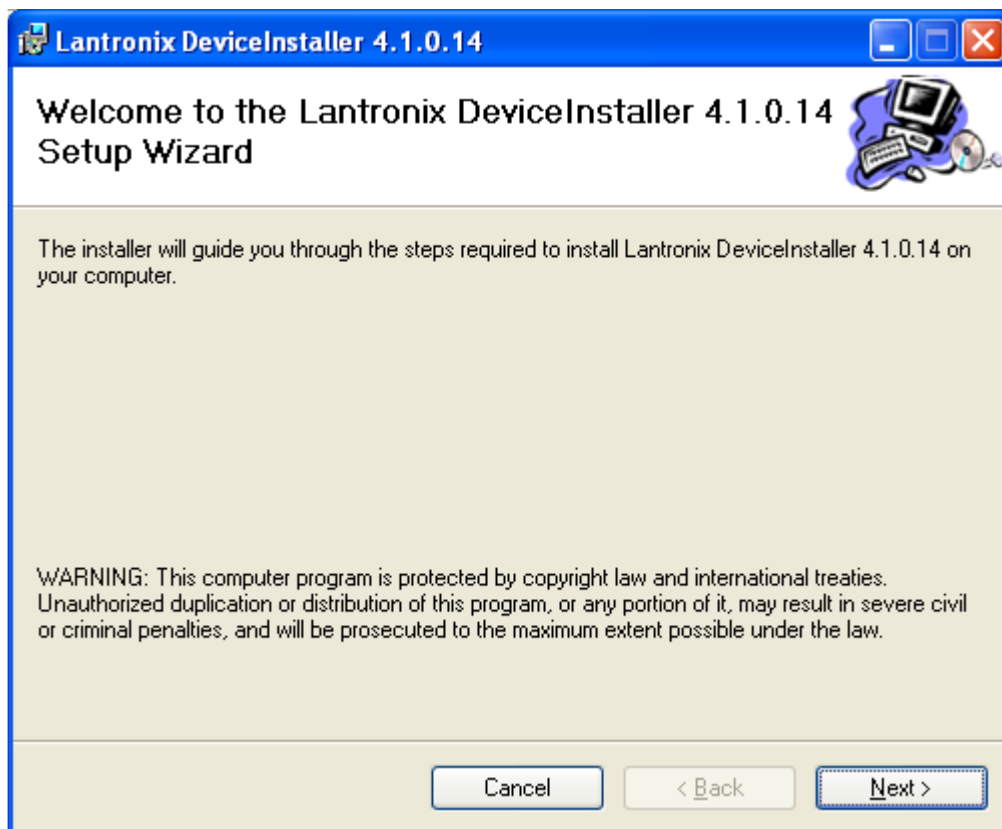


Fig. 1: Proceed with Next

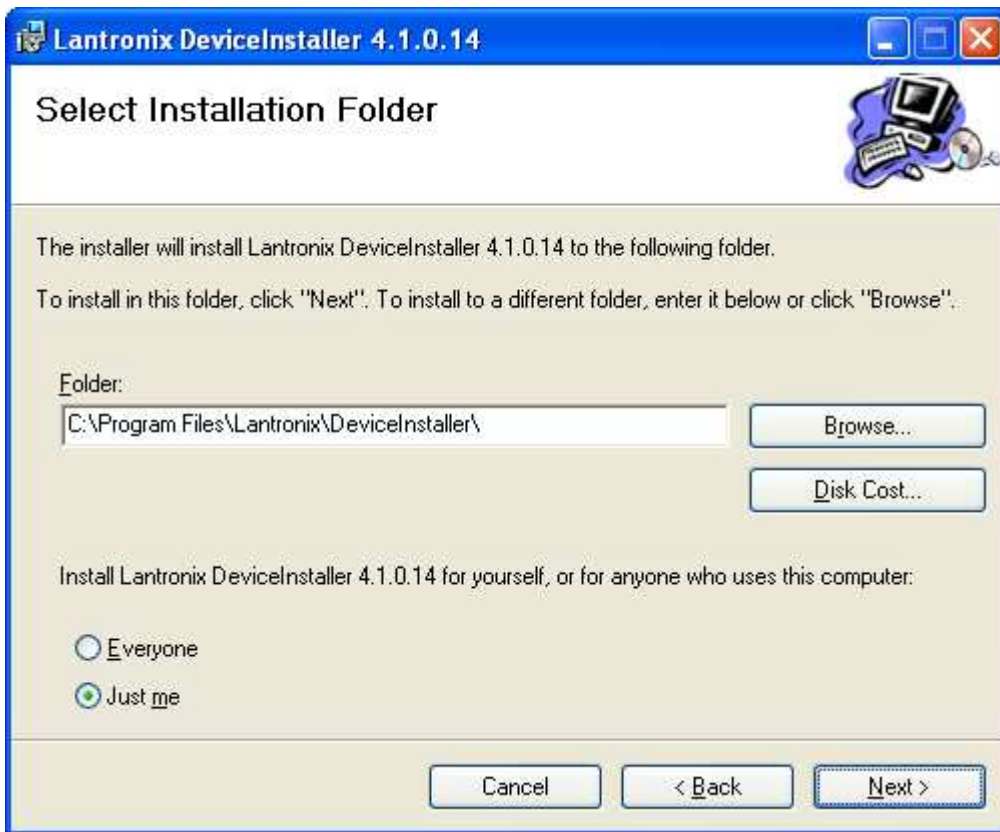


Fig. 2: Choose Folder and proceed with Next button

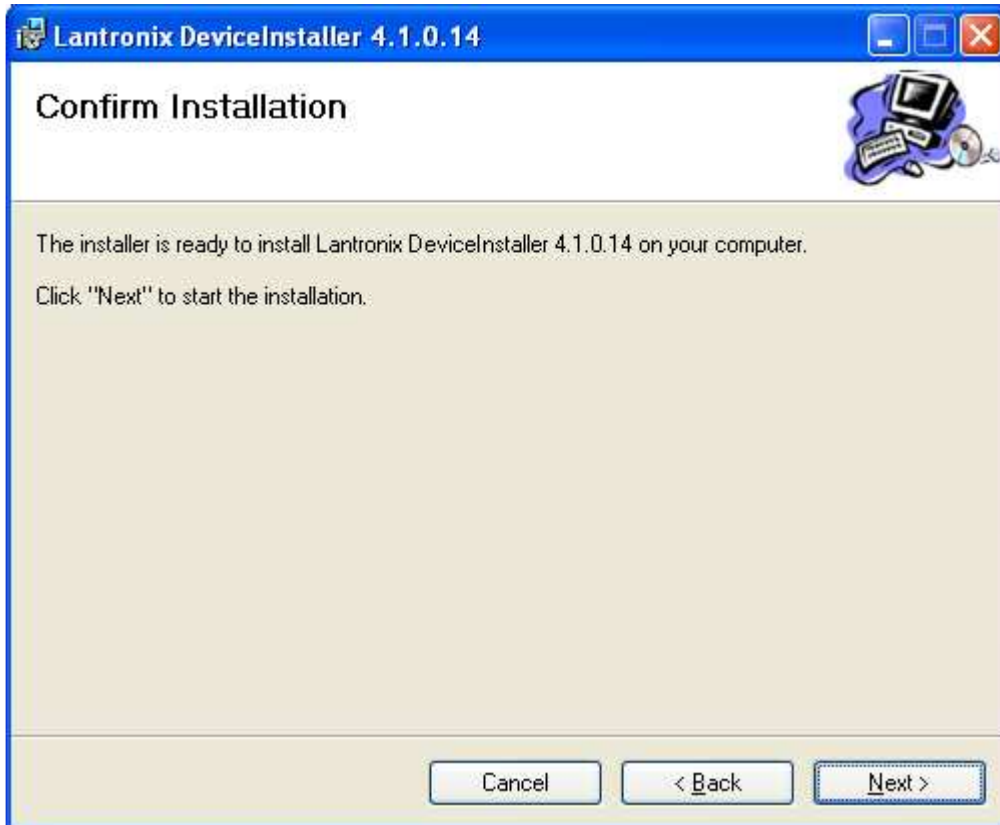


Fig. 3: Start the installation with Next button

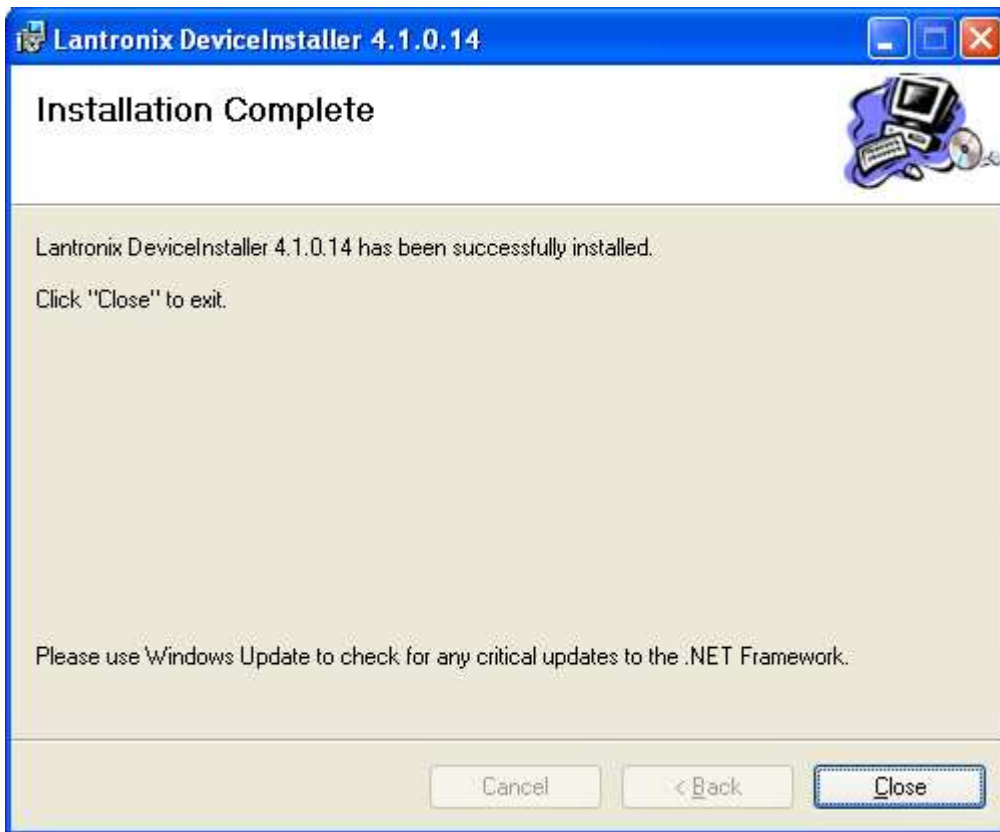


Fig. 4: After complete installation click on Close button

2.2 Setup IP address of TCP/IP

Attach network cable to TCP/IP module. Connect MAG X1 flowmeter with TCP/IP module to the power line – see User Guide for detailed informations.. Run Lantronix DeviceInstaller.



Fig. 5: You can change the IP address click on the Assign IP icon

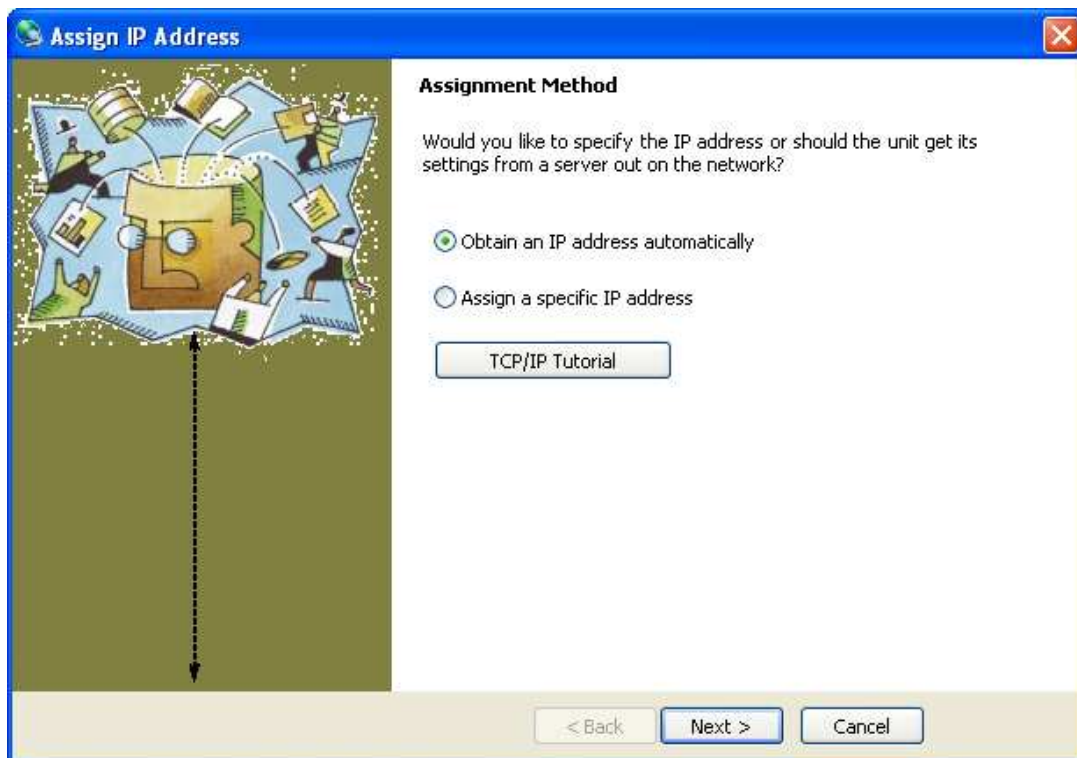


Fig. 6: You can choose automatically or specific IP address Assign and click on Next button

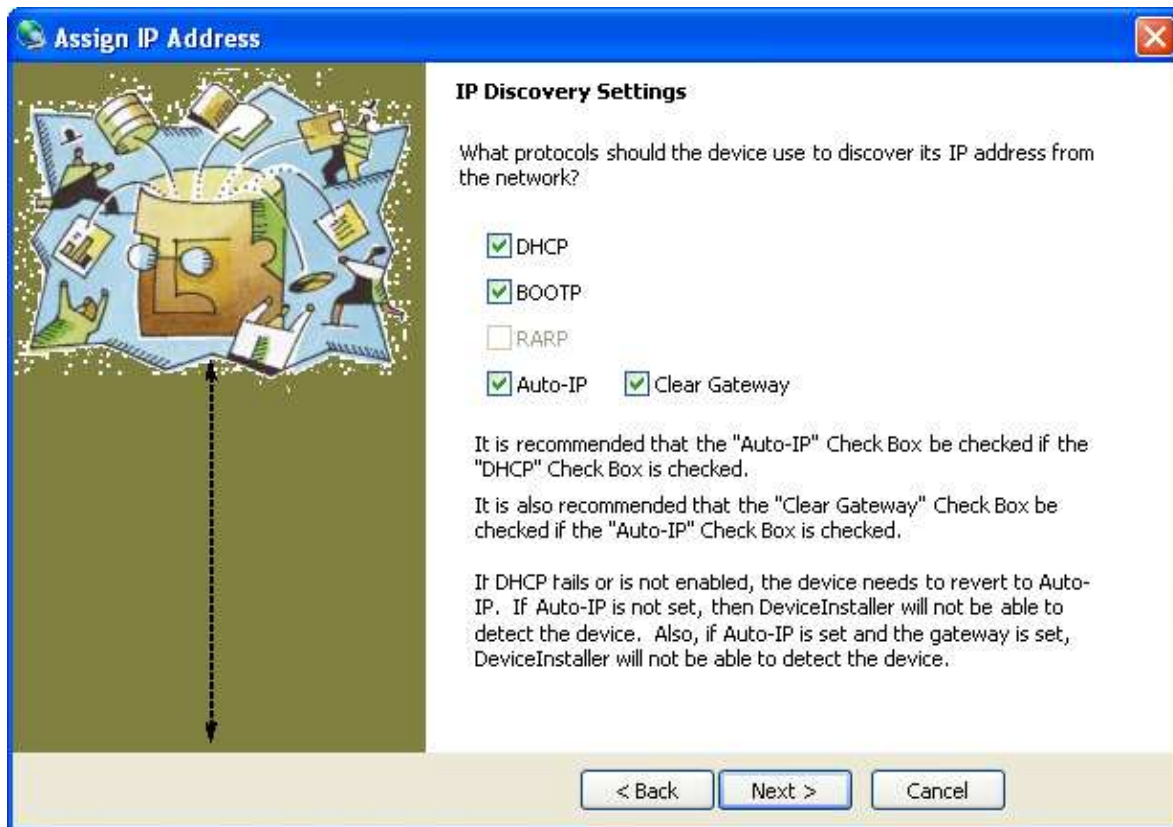


Fig. 7: For Obtain an IP address automatically option

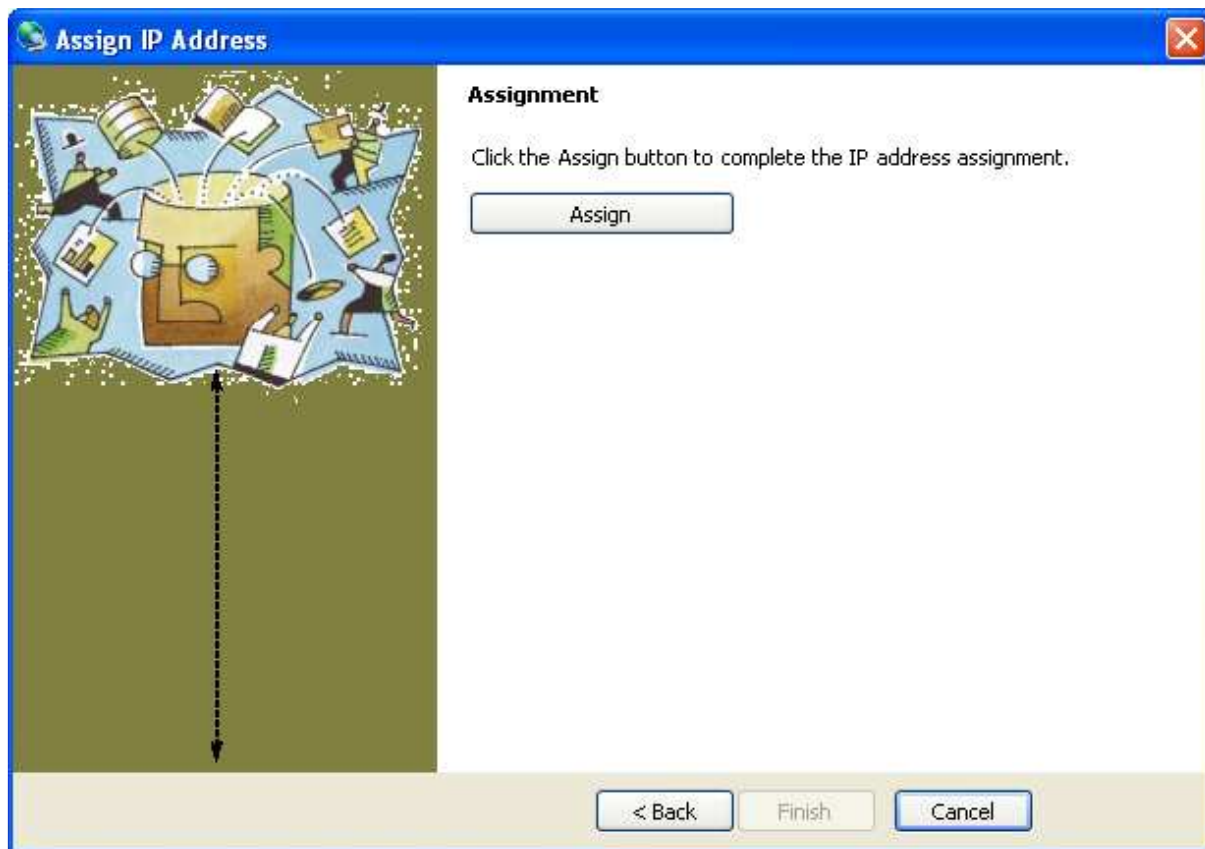


Fig. 8: Click on Assign button

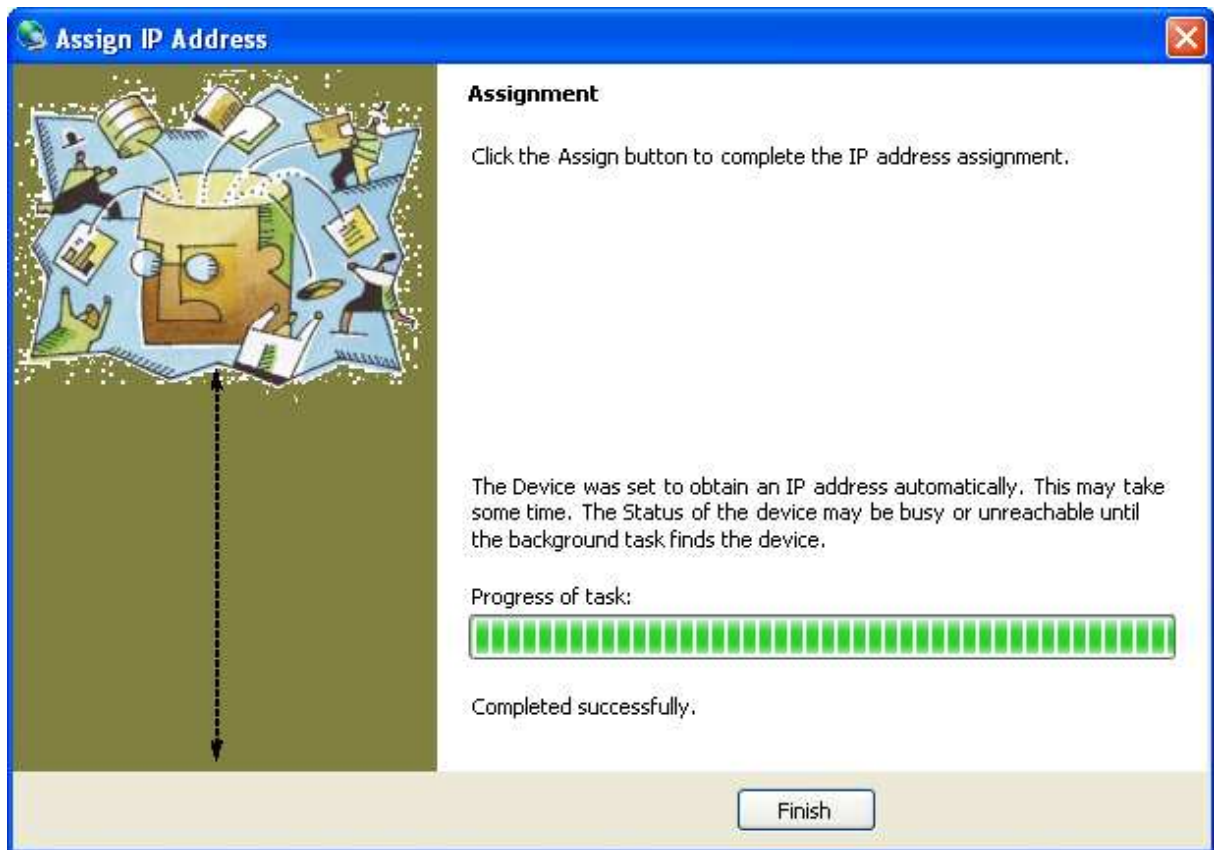


Fig. 9: For completion installation click on Finish button

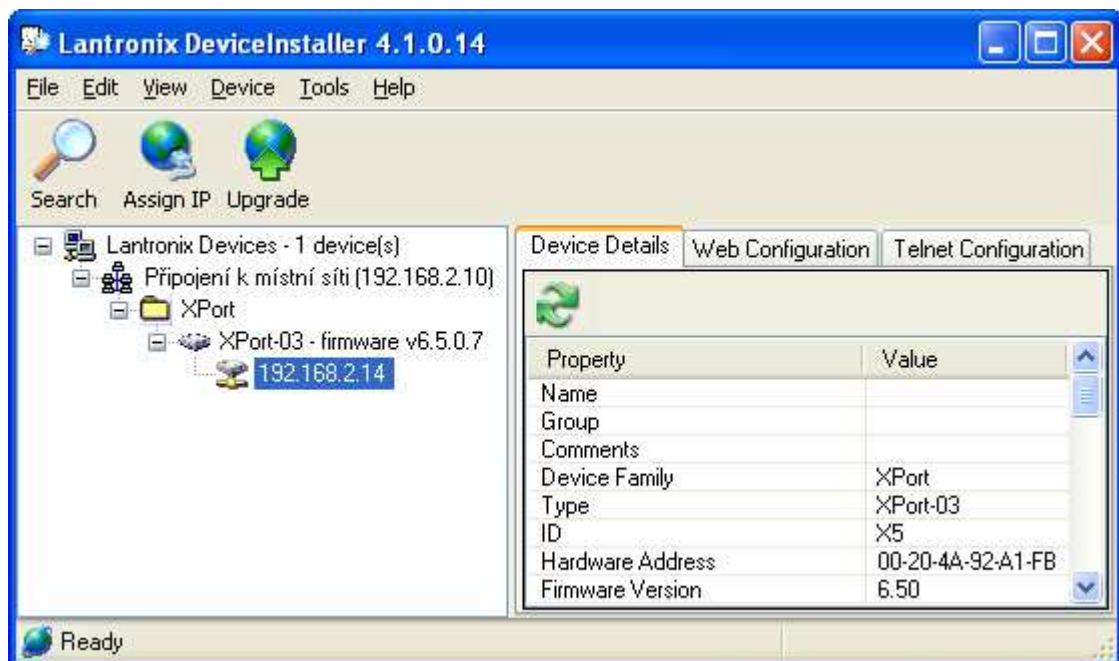


Fig. 10: Now TCP/IP module has new IP address (192.168.2.14 for this example)

2.3 Installation of Lantronix CPR

Latest version of the Lantronix CPR (Com Port Redirector):

http://ltxfq.custhelp.com/cgi-bin/ltxfq.cfg/php/enduser/std_adp.php?p_faqid=928

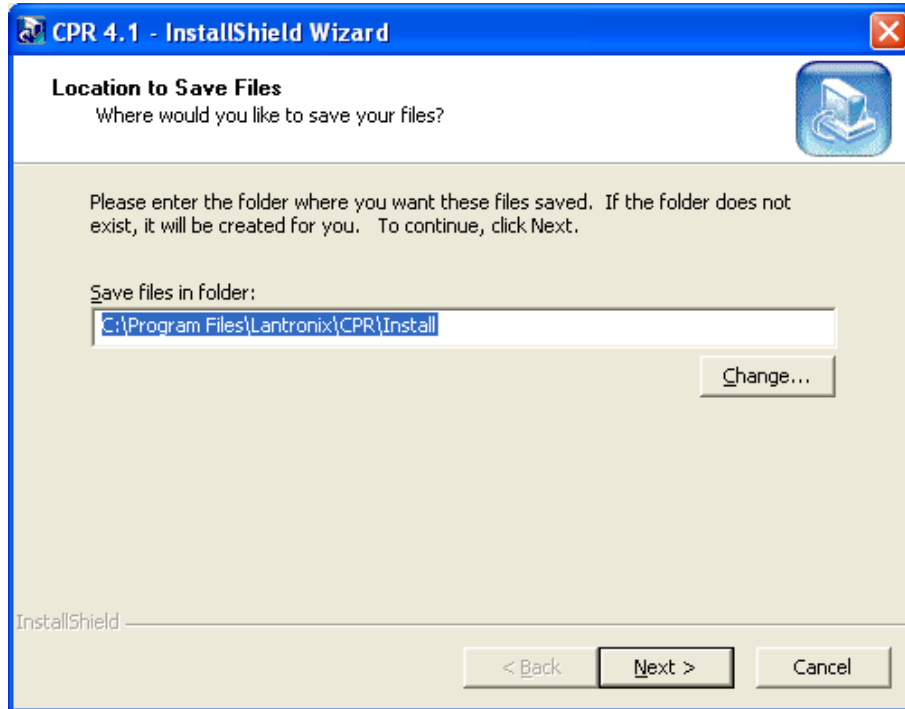


Fig. 11: Choose Folder for unpack installation files and click on Next button



Fig. 12: Proceed with Next button

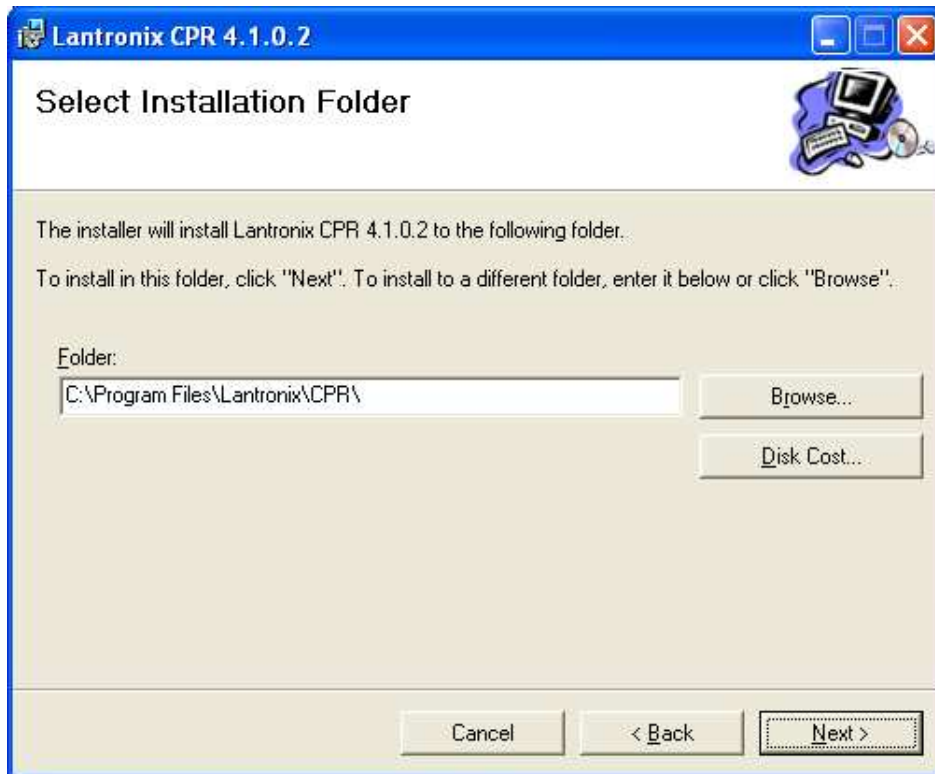


Fig. 13: Choose Folder for program and proceed with Next button

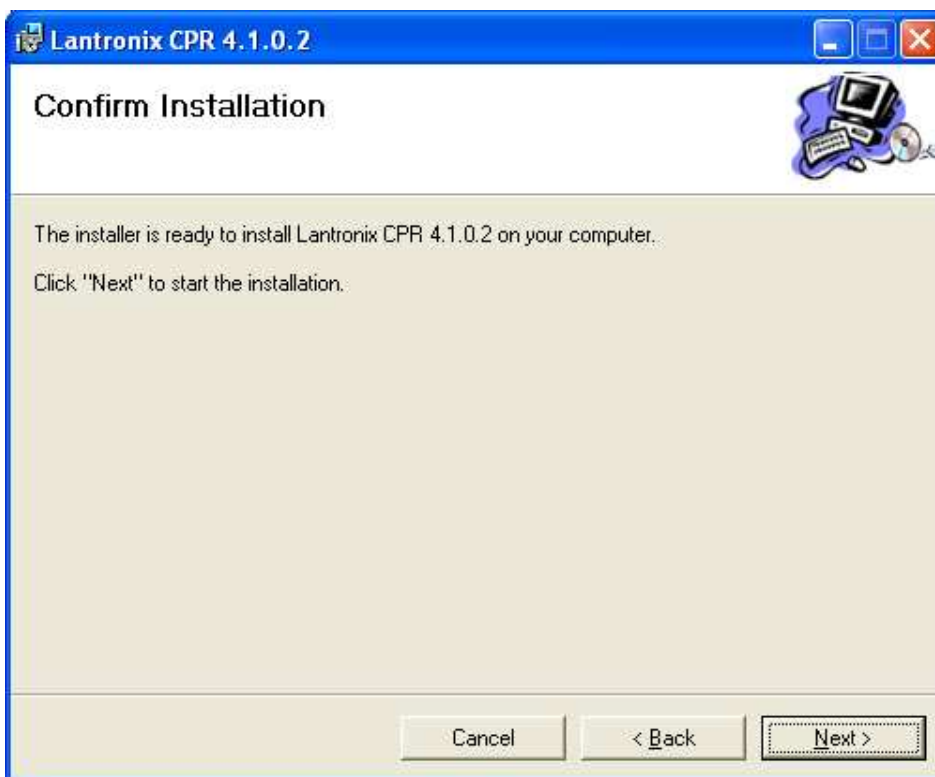


Fig. 14: Click on Next button to start the installation

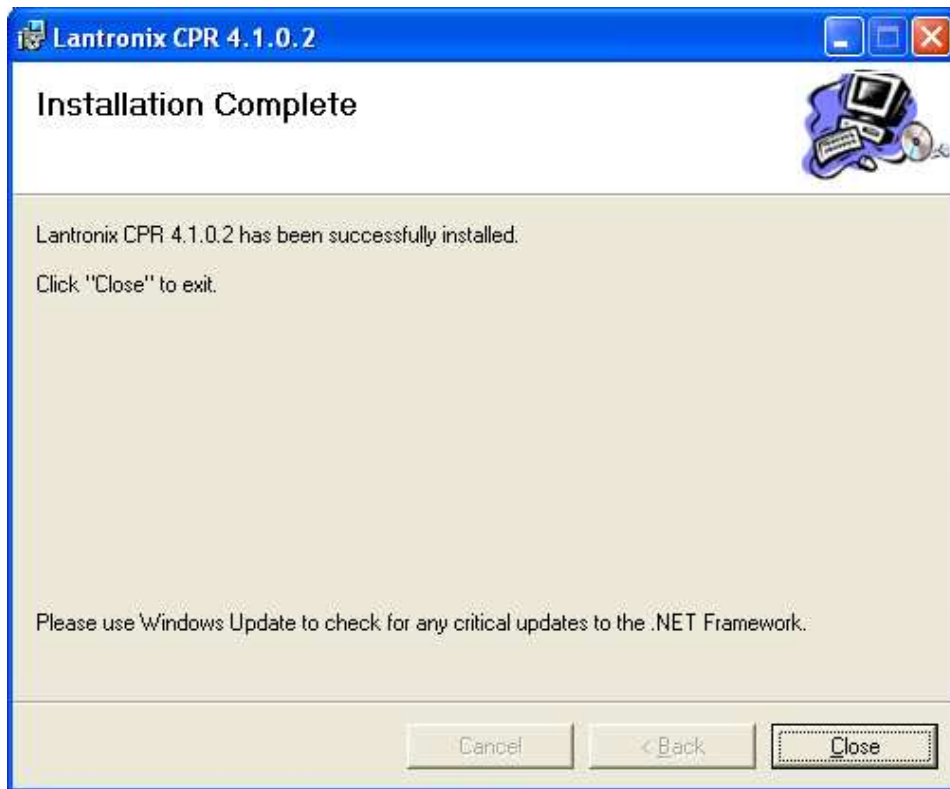


Fig. 15: After complete installation click on Close button

2.4 Setup virtual COM port with CPR manager program

Run CPR Manager.

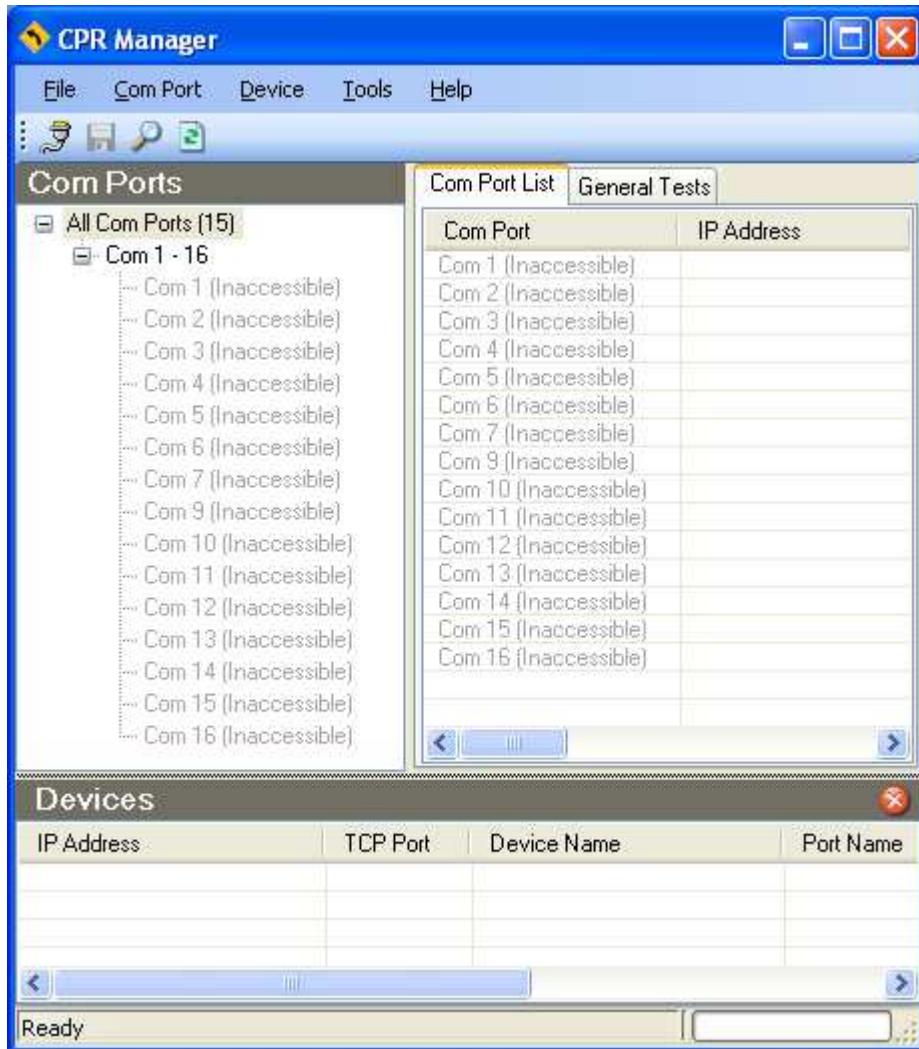


Fig. 16: Click on Search for Device icon (magnifying glass)

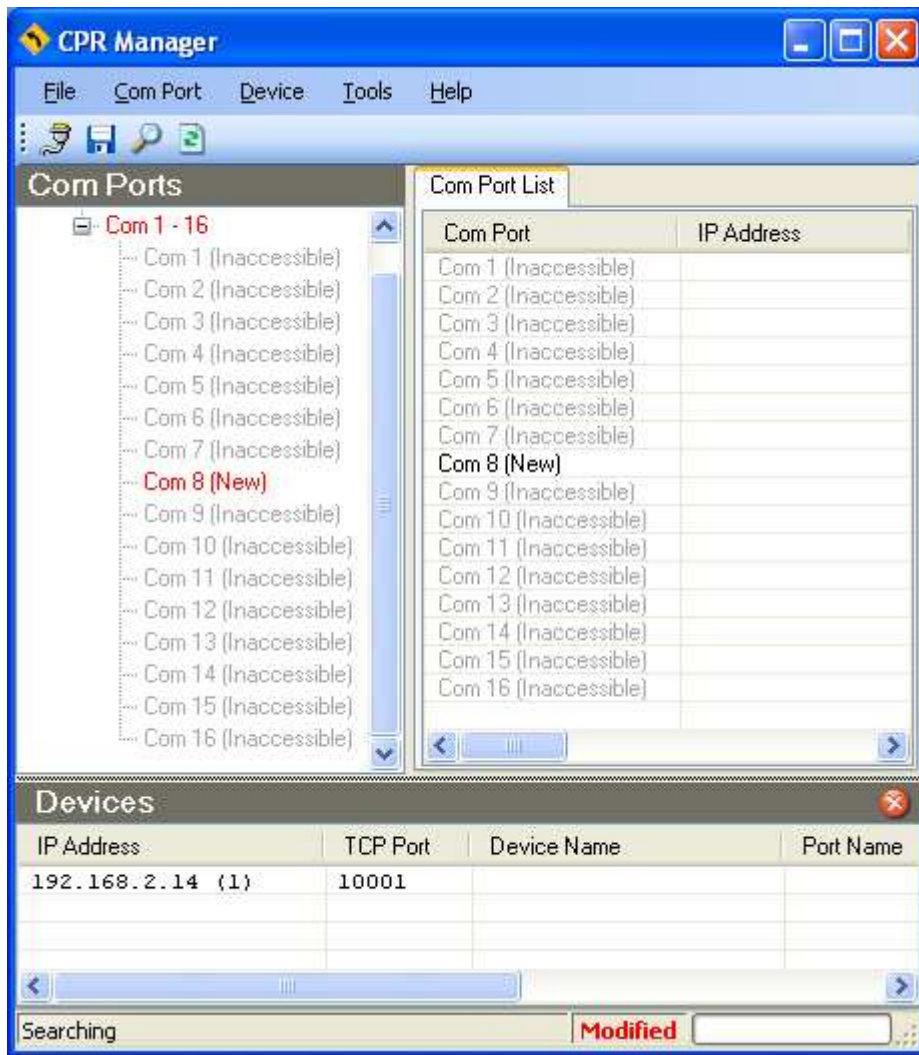


Fig. 17: Found the new Com Port (Com 8 for this example)

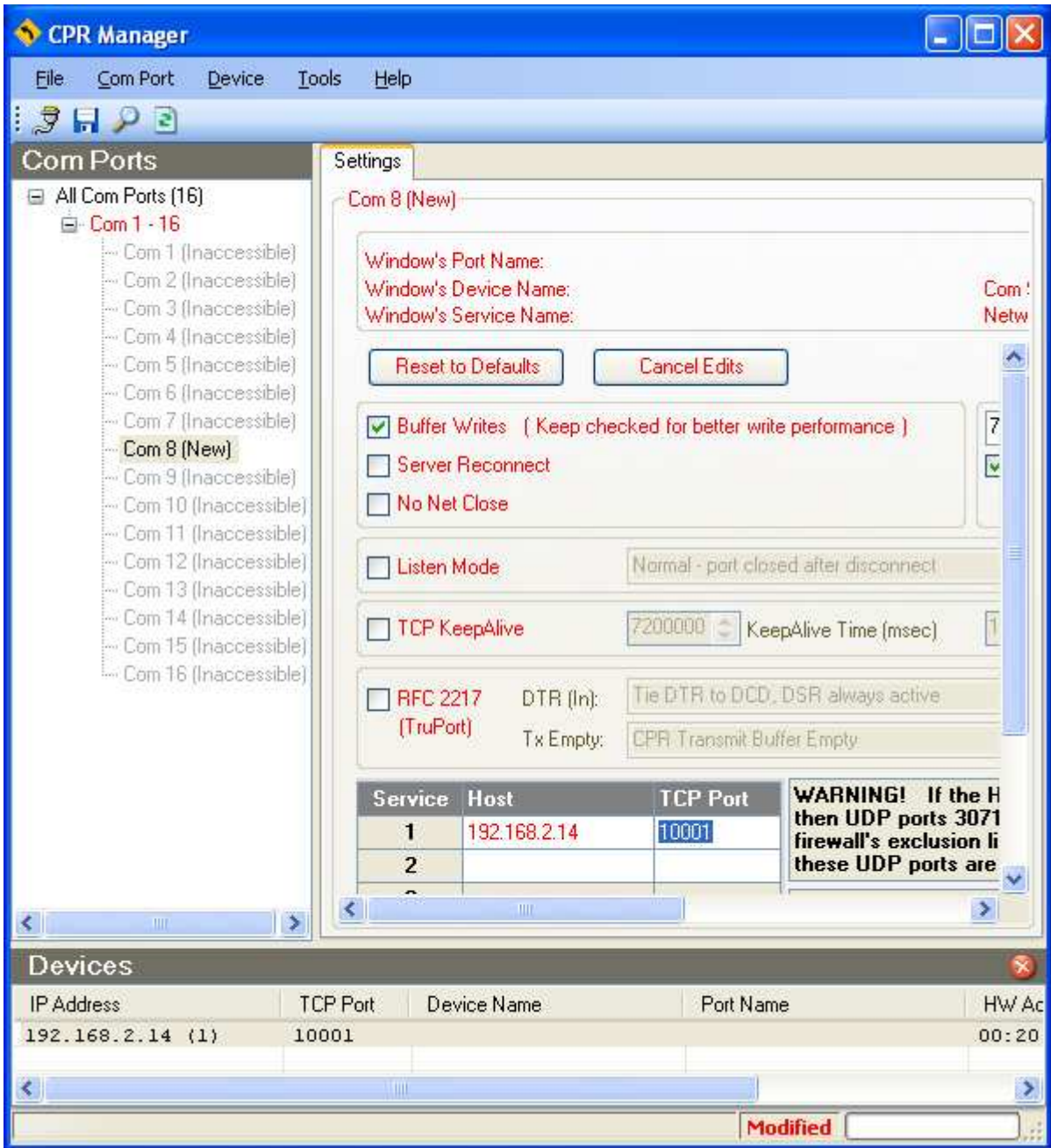


Fig. 18: Click on this new Com and setup Host and TCP Port (may be used later), then click on the Save Settings icon

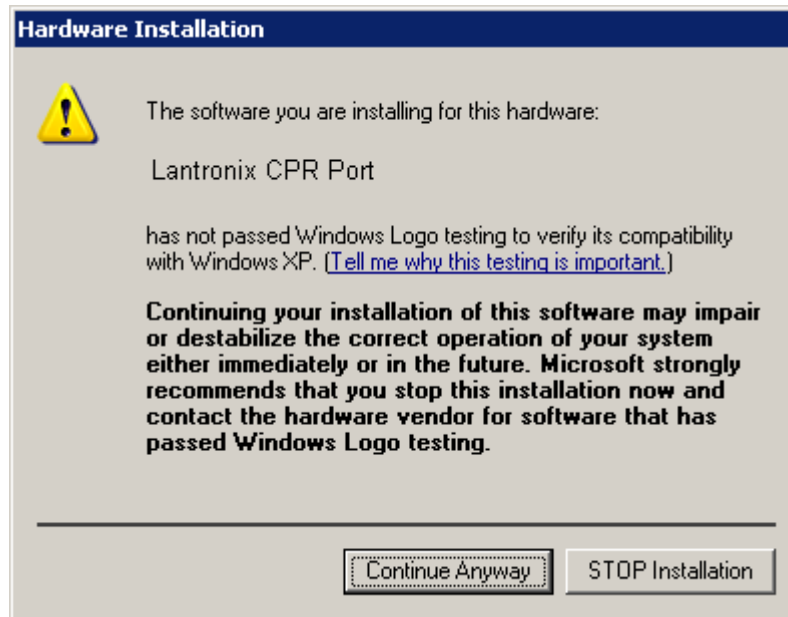


Fig. 19: Click on Continue Anyway button and setup is finished

3. Starting the program

After all the virtual COM ports of TCP/IP interface has been successfully installed and you can start using it with MAG X1 software.

An example of setting the virtual communication port, see following picture.

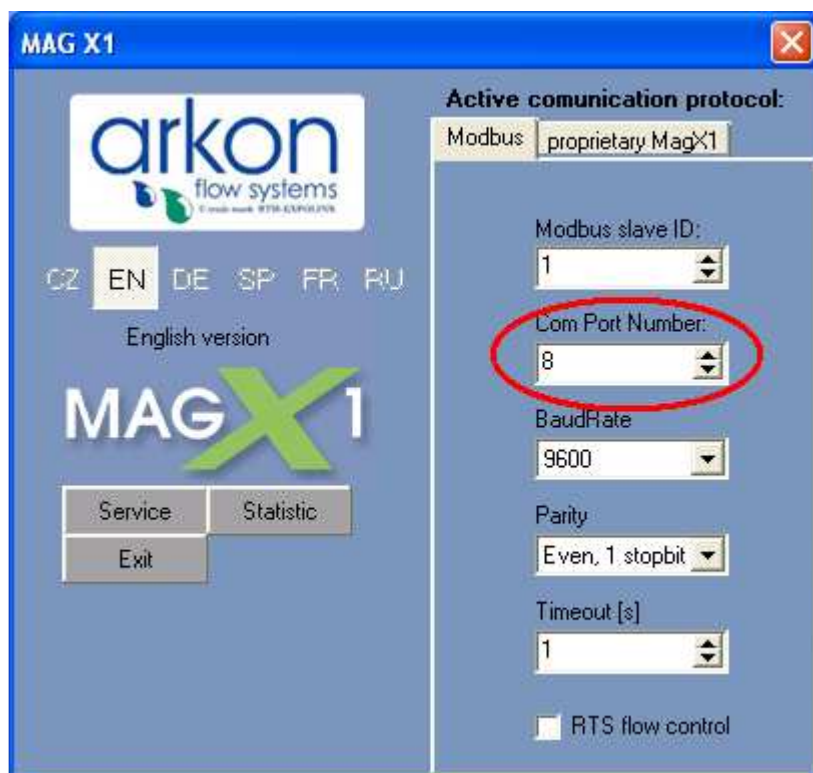


Fig. 20: Setup correct Com port (Com 8 for this example)