

P 09 Procedure Bluetooth Installation



Arkon Flow Systems

Arkon Flow Systems, s.r.o., Příkop 8, 602 00 Břno, Czech Republic
Correspondence address: Přízova 1-3, 602 00 Břno, Czech Republic

Tel. +420 543 214 822, Tel./Fax +420 543 215 249

Enquiries/ Orders/ General questions: office@arkon.co.uk

Marketing support/ Brochures: marketing@arkon.co.uk

Technical support: support@arkon.co.uk

www.arkon.co.uk



P 09 Procedure: Bluetooth Installation

Firmware: 2.0 and newer
Software: 1.0.6.12 and newer

List of Contents

1. INTRODUCTION.....	3
1.1 SYSTEM REQUIREMENTS.....	3
2. INSTALLATION INFORMATION	4
2.1 SETUP THE MAGX1 FLOWMETER CONNECTIONS	4
2.2 SETUP THE MS WINDOWS XP OPERATING SYSTEM	5
3. STARTING THE PROGRAM	10

1. Introduction

This document describes install and setup the bluetooth module under MS Windows XP SP2.

1.1 System requirements

There are minimum hardware and software requirements of your computer that must be satisfied to ensure that the software functions properly. These are:

- PC with bluetooth adaptor,
- MS Windows XP operating system with service pack 2 or higher,
- MagX1 Software or other
- MagX1 flowmeter with bluetooth modul.

2.2 Setup the MS Windows XP operating system

After inserted the bluetooth adaptor to the PC is displayed request for drivers. If you have Windows XP SP2 We strongly recommend you use the generic drivers rather than the ones that ship with the device. The Windows drivers are actually a lot easier to use. Just plug it in and Windows will do the rest. You should see a Device Manager and Bluetooth icon in the taskbar notification area if the drivers are installed. After the driver of bluetooth interface has been successfully installed, open "Control panel / Bluetooth devices".

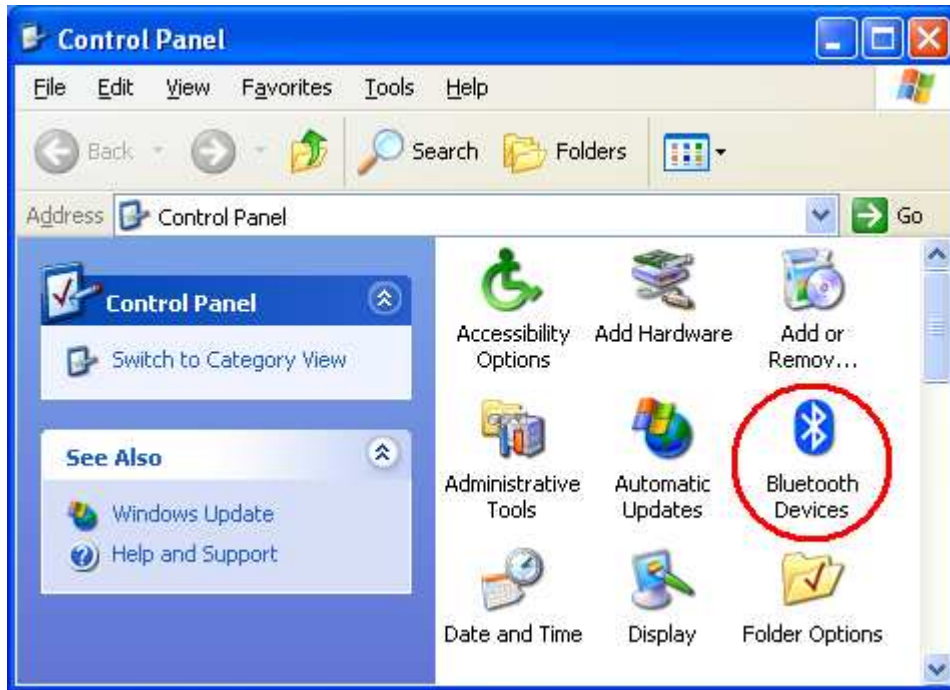


Fig. 2: Control Panel

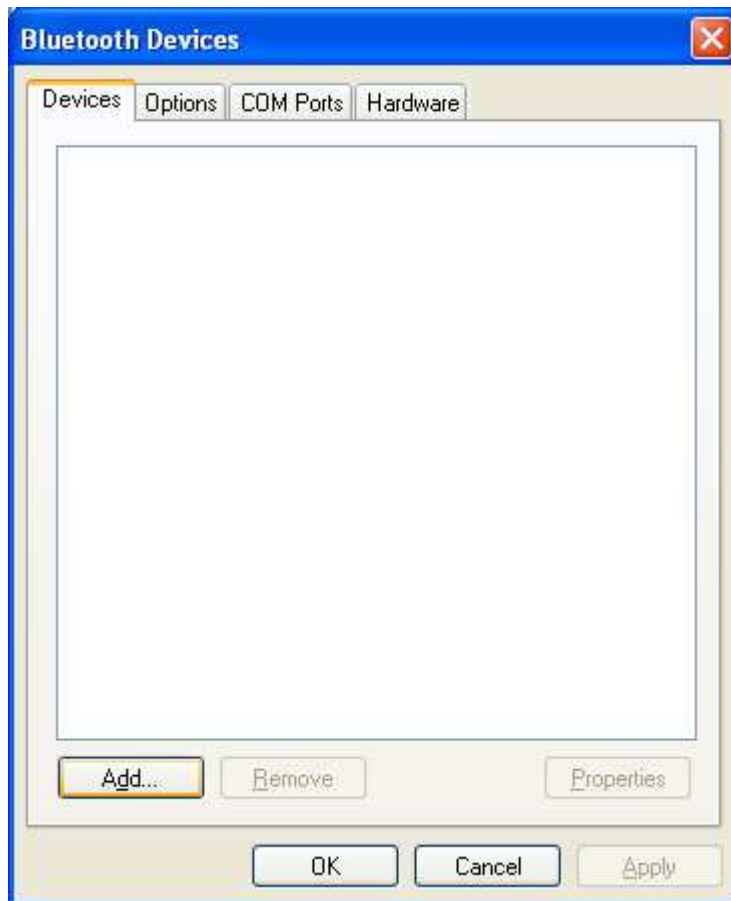


Fig 3: Add Devices



Fig. 4: Check 'My devices is set up and ready to be found' and click on Next

If the device is detected the following dialog box is displayed. Chose “Serial Adaptor” and click on Next button.

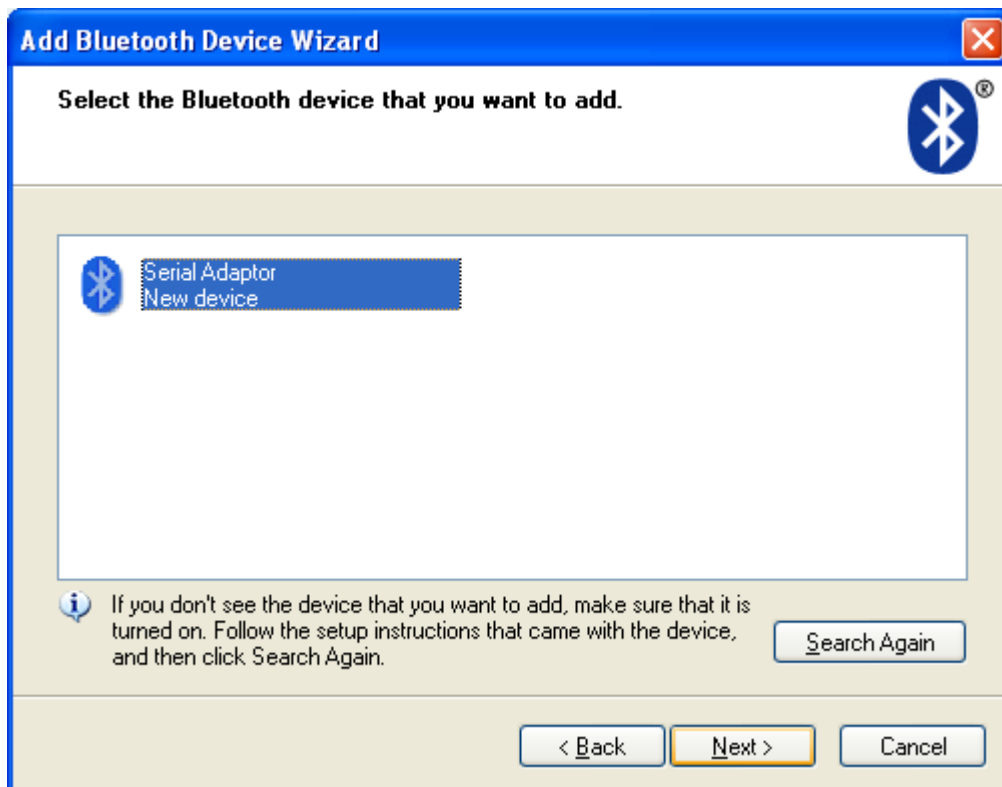


Fig. 5: Choose Serial Adaptor device and click on Next

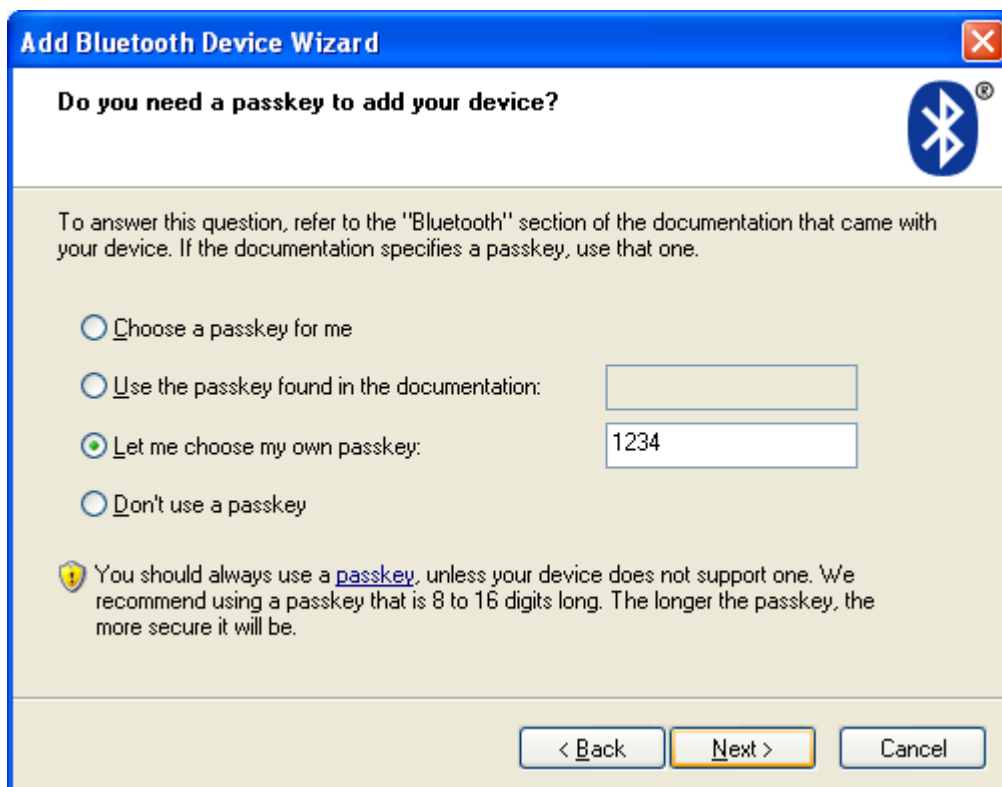


Fig. 6: Enter passkey 1234 and click on Next

Once you have entered the passkey, you will see the screen below documenting the com ports for incoming and outgoing connections.



Fig. 7: Computer and this Flowmeter can communicate via Outgoing COM3 port.



Fig. 8: You can change the name of devices in Properties

3. Starting the program

After all the virtual serial ports of Bluetooth interface has been successfully installed, open "Control panels / Bluetooth device". In the item "COM ports" there are the virtual installed serial ports shown. The number of the outgoing serial port must be entered into the SW MagX1. The rest of the parameters of the communication must be set on the same values as the flow meter MagX1 is (Section2.1).

An example of setting the virtual communication port, see following picture.

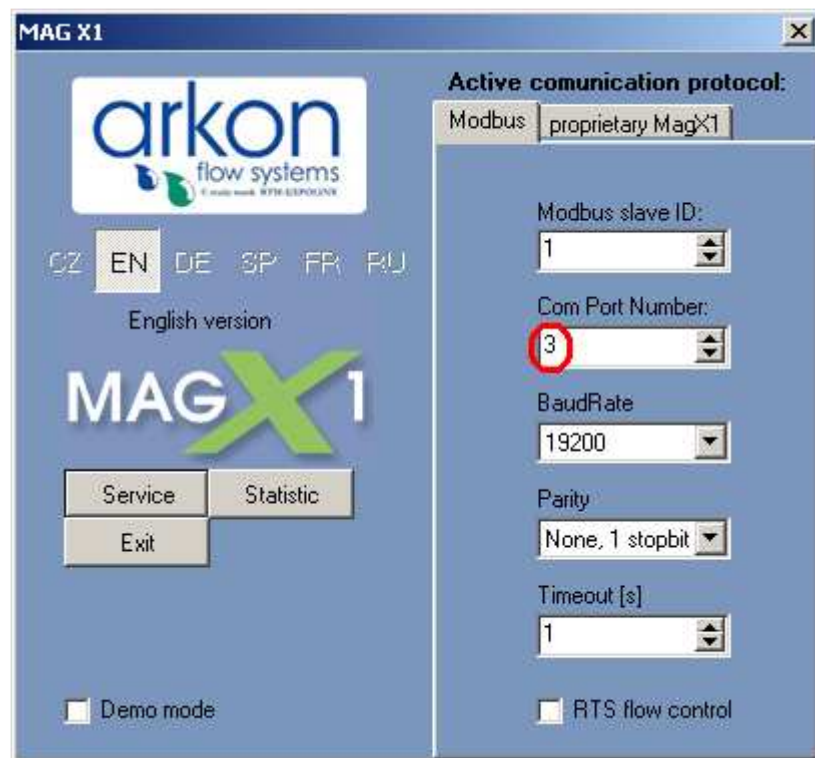


Fig. 9: Setup right COM port number (for this flowmeter COM3)